



School of Pharmacy, Monad University, Hapur

Result Analysis (July -2020)

S. No	Course	Year/ Sem	% Result			
			>50%	50-60%	60-80%	<80%
1.	B. Pharm	II <sup>nd</sup>	00	00	96	04
		IV <sup>th</sup>	00	01	97	05
		VI <sup>th</sup>	00	08	59	02
		VIII <sup>th</sup>	04	00	35	05
2.	M. Pharm (Chemistry)	II <sup>nd</sup>	00	00	00	07
		IV <sup>th</sup>	00	00	00	01
	M. Pharm (Cology)	II <sup>nd</sup>	00	00	00	08
		IV <sup>th</sup>	04	00	00	04

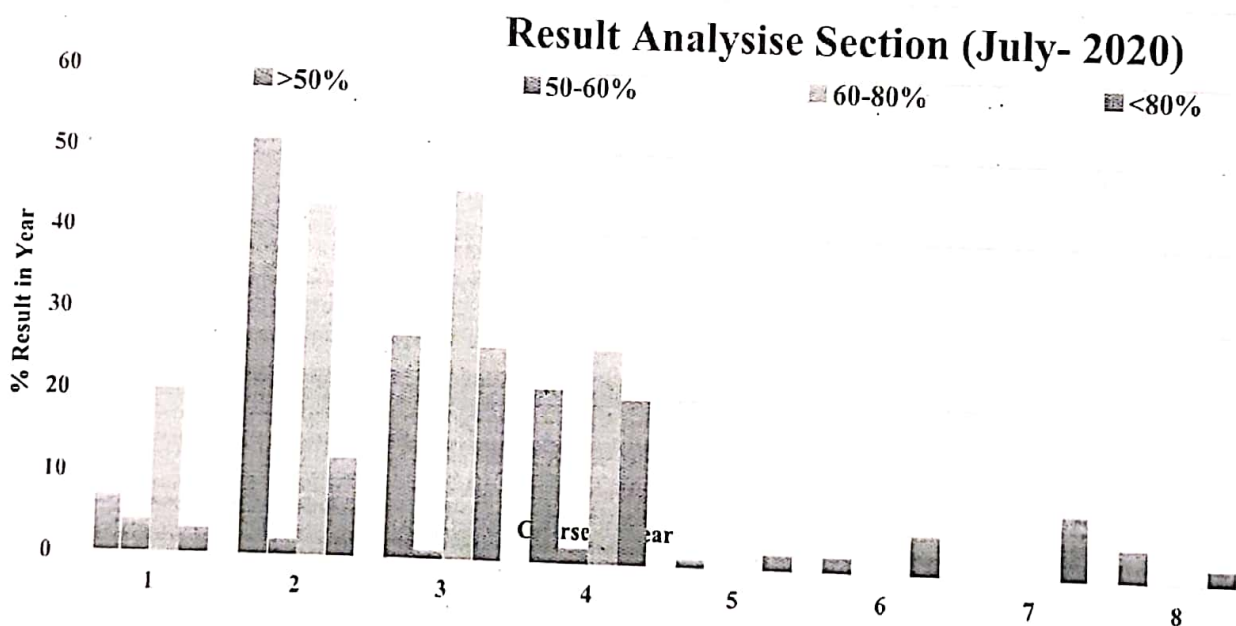


Fig.1 Result Analysis (July -2020)



School of Pharmacy, Monad University, Hapur

Result Analysis (July -2021)

S. No	Course	Year/ Sem	% Result			
			>50%	50-60%	60-80%	<80%
1.	B. Pharm	II <sup>nd</sup>	01	00	36	01
		IV <sup>th</sup>	17	01	83	00
		VI <sup>th</sup>	00	08	59	02
		VIII <sup>th</sup>	17	01	43	01
2.	M. Pharm (Chemistry)	II <sup>nd</sup>	03	00	00	04
		IV <sup>th</sup>	00	00	00	03
	M. Pharm (Cology)	II <sup>nd</sup>	03	00	00	05
		IV <sup>th</sup>	00	02	00	00

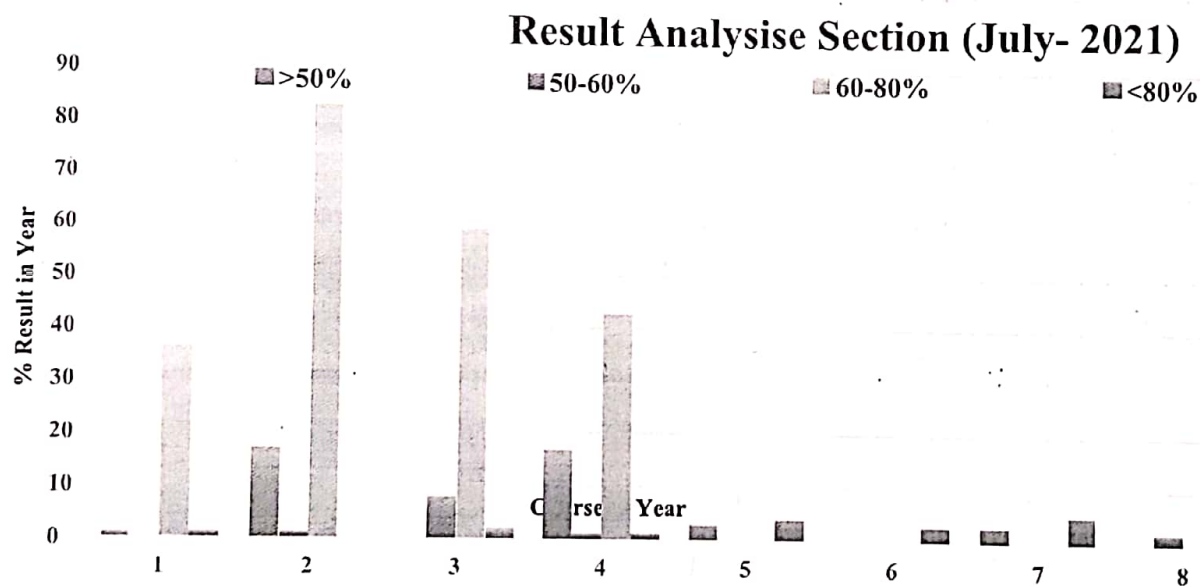


Fig.1 Result Analysis (July -2021)

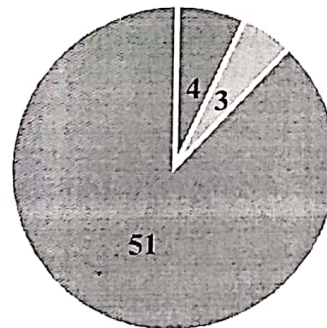


School of Pharmacy, Monad University, Hapur

Result Analysis (July - 2021)

S. No	Course	Year	In %			
			>50%	50-60%	60-80%	<80%
1.	D. Pharm	I <sup>st</sup>	00	04	03	51
2.		II <sup>nd</sup>	03	00	57	00

■ >50%    ■ 50-60%    ■ 60-80%    ■ <80%



D. Pharm

Fig.1 Result Analysis (July - 2020)



School of Pharmacy, Monad University, Hapur

Result Analysis (March -2021)

S. No	Course	Year/ Sem	% Result			
			>50%	50-60%	60-80%	<80%
1.	B. Pharm	I <sup>st</sup>	07	04	20	03
		III <sup>rd</sup>	44	02	43	12
		V <sup>th</sup>	27	01	45	26
		VII <sup>th</sup>	21	02	26	20
2.	M. Pharm (Chemistry)	I <sup>st</sup>	01	00	00	02
		III <sup>rd</sup>	02	00	00	05
	M. Pharm (Cology)	I <sup>st</sup>	00	00	00	08
		III <sup>rd</sup>	04	00	00	02

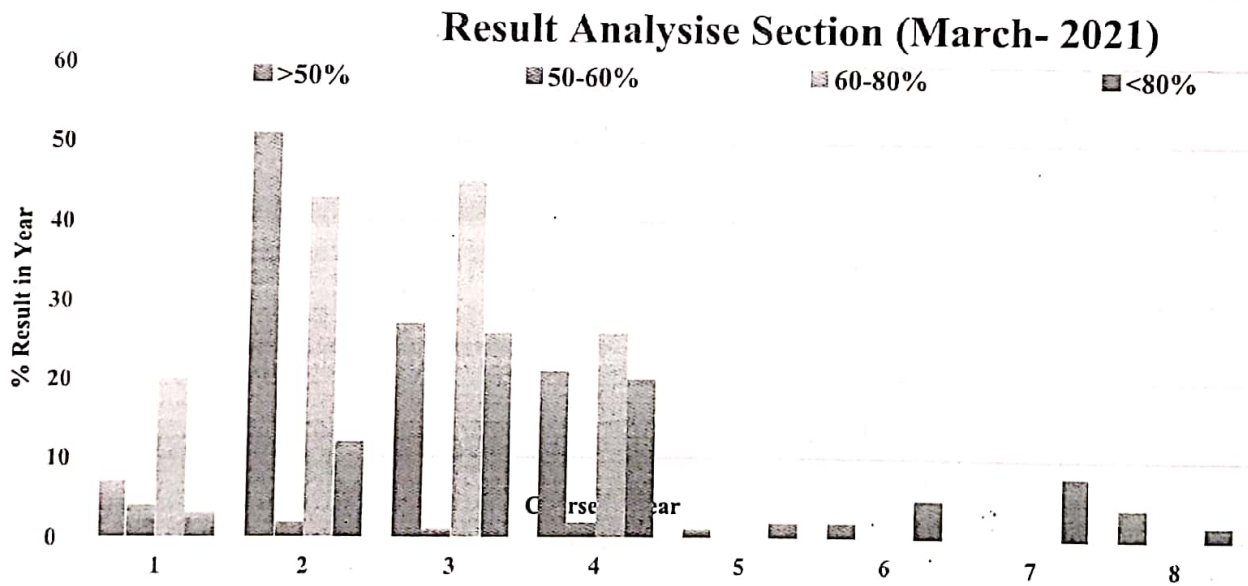


Fig.1 Result Analysis (July -2020)

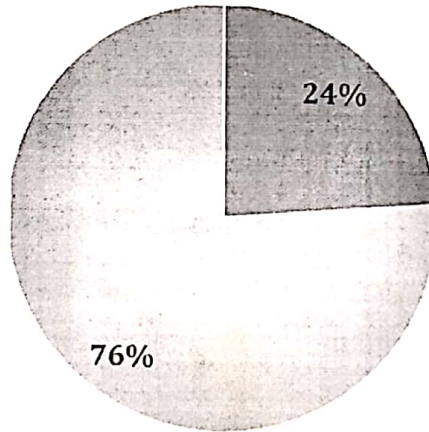


School of Pharmacy, Monad University, Hapur

Result Analysis (July - 2021)

S. No	Course	Year	In %			
			>50%	50-60%	60-80%	<80%
1.	D. Pharm	I <sup>st</sup>	Parmote All Students			
2.		II <sup>nd</sup>	14	00	45	00

■ >50%    ■ 50-60%    ■ 60-80%    ■ <80%



**D. Pharm**

Fig.1 Result Analysis (July - 2021)



School of Pharmacy, Monad University, Hapur

Result Analysis (2019-2020)

S. No	Course	Year/ Sem	%			
			>60%	61-70%	71-80%	<80%
1.	D. Pharm	I <sup>st</sup>	00	00	00	00
		II <sup>nd</sup>	07	02	51	00
2.	B. Pharm	II <sup>nd</sup>	02	10	27	00
		IV <sup>th</sup>	00	43	56	01
		VI <sup>th</sup>	00	32	67	00
		VIII <sup>th</sup>	23	01	45	01
3.	M. Pharm (Chemistry)	II <sup>nd</sup>	00	29	42	29
		IV <sup>th</sup>	00	03	00	00
	M. Pharm (Cology)	II <sup>nd</sup>	00	50	50	00
		IV <sup>th</sup>	02	01	00	00

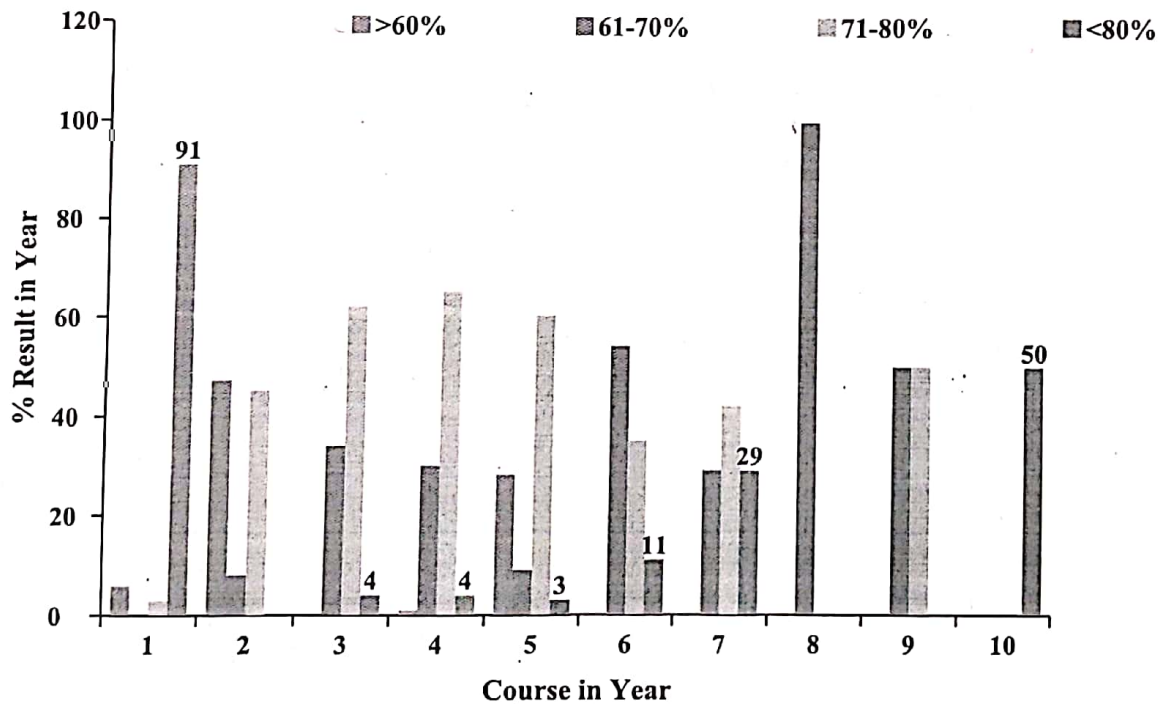


Fig.1 Result Analysis (2019-2020)